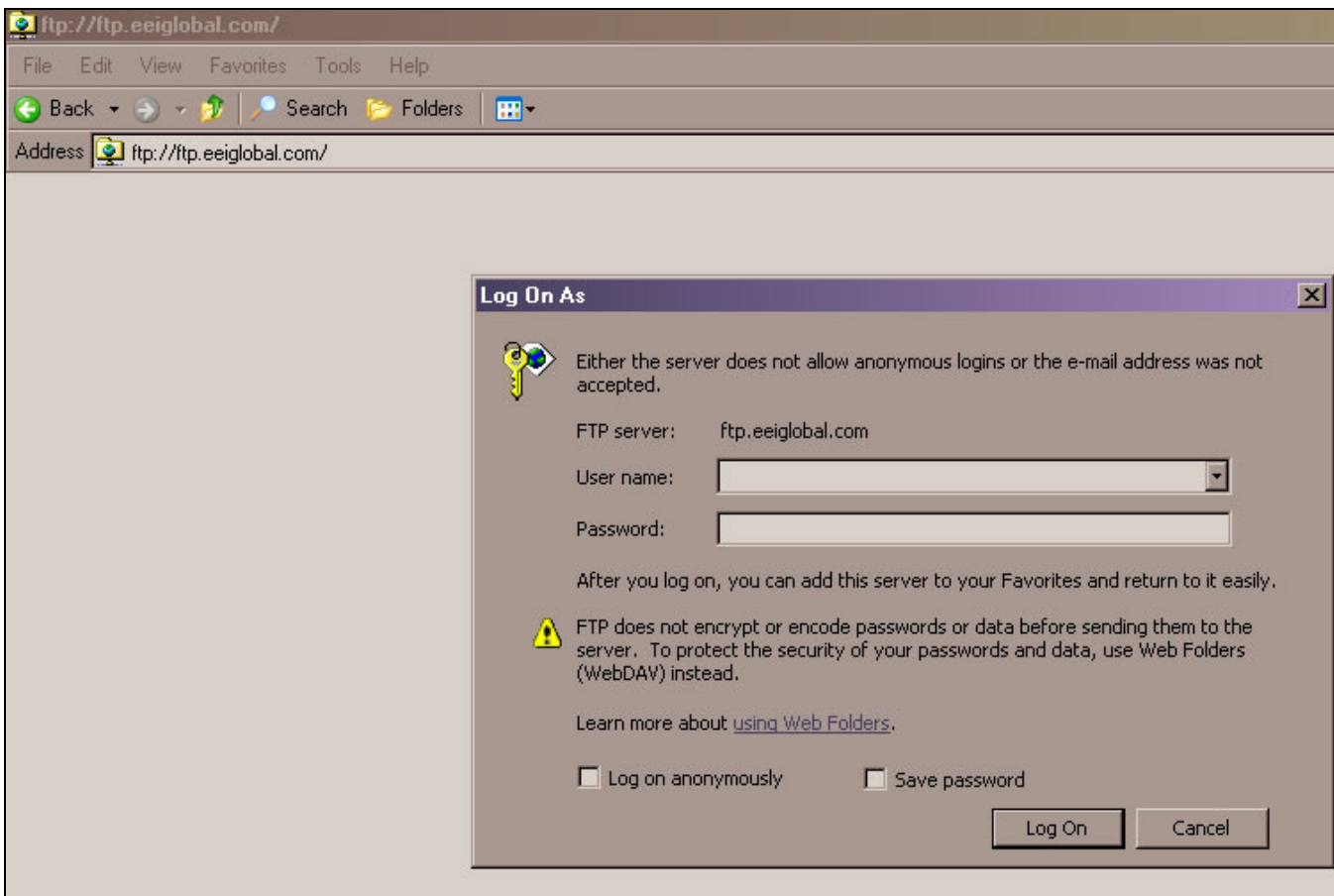




EEI FTP Access Procedure for Windows Users

In order to access the EEI ftp site, please use one of the following procedures. You should use Windows Explorer to access our ftp site.

1. Open Windows Explorer by double clicking on “My Computer” and entering <ftp://ftp.eeiglobal.com> directly into the Address bar.
2. When you first open the site, you will be logged in anonymously, and you may see the pop-up below. If you do not see the login below, and are unable to access files, you will need to manually call this login screen.



3. You can manually call the login screen by clicking on File and then Login As..
 - Type “ ftp.ftp.eeiglobal.com “ in the address bar
 - You will then be prompted to enter a User Name: and Password:
 - Your screen should look similar to the one above.
 - Note: If your logging in automatically as the wrong user, then select ‘file’ and then ‘login as’

